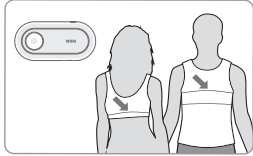


WIIM™ one

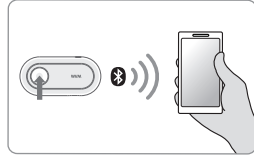
Quick Start Guide

Thanks for purchasing WIIM ONE! Please read this quick start guide before you start using it. If you require any further assistance, please feel free to contact us.

● Getting Started



1. Wear the smart clothing.
2. Buckle WIIM ONE on the smart clothing.



3. Turn on WIIM ONE by pressing power button.
4. Open the smart phone APP to pair the WIIM ONE.

● After Using

Please remove WIIM ONE before washing the smart clothing.

● Charging the device

WIIM ONE can be charged through a Micro USB charging cable with 5V/1A adaptor.

● Attention

Do NOT use this product if you are also using an implantable medical device, such as a pacemaker or implantable cardioverter defibrillator.

Do NOT use this product if you are pregnant or suspect you might be pregnant.

Avoid using in high magnetic environment.

This device complies with Part 15 of the FCC Rules. Operation is subject to the following two conditions:

- (1) this device may not cause harmful interference, and
- (2) this device must accept any interference received, including interference that may cause undesired operation of the device.

This equipment has been tested and found to comply with the limits for a Class B digital device, pursuant to part 15 of the FCC Rules.

These limits are designed to provide reasonable protection against harmful interference in a residential installation.

This equipment generates, uses and can radiate radio frequency energy and, if not installed and used in accordance with the instructions, may cause harmful interference to radio communications. However, there is no guarantee that interference will not occur in a particular installation.

If this equipment does cause harmful interference to radio or television reception, which can be determined by turning

the equipment off and on, the user is encouraged to try to correct the interference by one or more of the following measures:

- Reorient or relocate the receiving antenna.
- Increase the separation between the equipment and receiver.
- Connect the equipment into an outlet on a circuit different from that to which the receiver is connected.
- Consult the dealer or an experienced radio/TV technician for help.

You are cautioned that changes or modifications not expressly approved by the part responsible for compliance could void the user's authority to operate the equipment.

FCC RF Radiation Exposure Statement:

1. This Transmitter must not be co-located or operating in conjunction with any other antenna or transmitter.
2. For body worn operation, this device has been tested and meets FCC RF exposure guidelines. When used with an accessory that contains metal may not ensure compliance with FCC RF exposure guidelines.

WIIM™ one

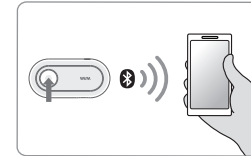
快速安裝手冊

感謝您購買WIIM ONE。首先，請在使用前先閱讀本快速安裝手冊。假如您在使用中有任何需要幫助，請與我們聯絡。

● 開始之前



1. 穿上智慧衣
2. 於智慧衣扣上WIIM ONE



3. 按下電源鍵開啟WIIM ONE
4. 開啟手機APP進行藍芽配對

● 使用後的注意事項

WIIM ONE僅能防潑水，請務必在清洗衣服前取下裝置。

● 充電說明

WIIM ONE可以透過Micro USB充電線進行充電。

● 注意

如果您正在使用植入式醫療產品，例如心率調節器或心率除顫器，請不要使用本產品。

如果您正懷孕中或是可能懷孕，請不要使用本產品。

避免在高磁力環境中使用。

根據 NCC LP0002低功率射頻器材技術規範_章節3.8.2：

取得審驗證明之低功率射頻器材，非經核准，公司、商號或使用者均不得擅自變更頻率、加大功率或變更原設計之特性及功能。

低功率射頻器材之使用不得影響飛航安全及干擾合法通信；經發現有干擾現象時，應立即停用，並改善至無干擾時方得繼續使用。

前述合法通信，指依電信管理法規定作業之無線電通信。

低功率射頻器材須忍受合法通信或工業、科學及醫療用電波輻射性電機設備之干擾。